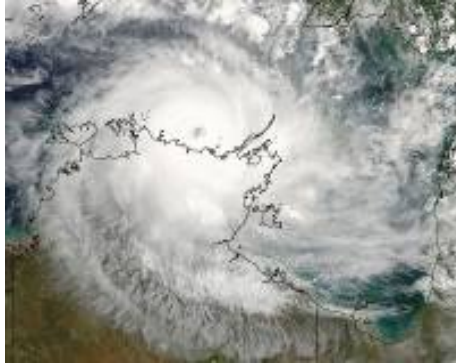


Extreme Weather

Each year Roper Gulf prepares for the wet season. Cyclones, Flooding and Lightning Strikes are events with high potential for harm to our people. Be prepared this wet season.



Cyclones

Know what to do when each alert is issued.

Be prepared before an alert is issued – get your household emergency kit ready and tidy your yard now.

Cyclone Alerts

A tropical cyclone watch is issued for coastal communities when the onset of gales is expected within 48 hours, but not within 24 hours.

A tropical cyclone warning is issued for coastal communities when the onset of gales is expected within 24 hours, or are already occurring

Staying safe from lightning

Regularly monitor weather conditions

Use the 30/30 rule

Safe shelter areas include:

- Fully enclosed metal vehicles with windows up
- Substantial buildings
- Low ground

Unsafe shelter areas include:

- Outdoor metal objects such as power poles and road machinery.
- Solitary trees
- Avoid water, open fields, high ground or caves



Flooding

Eliminate your exposure to injury, drowning and equipment damage by never crossing fast flowing rivers or creeks.

Slow down and remain vigilant on roads.

Expect road closures following rain and never drive around barricades.

Check the NT Road Report website before starting your journey

Extreme Weather – Q & A

What are the different cyclone alert levels and what do they mean?

Tropical cyclone watch - issued for coastal communities when the onset of gales is expected within 48 hours, but not within 24 hours.

Tropical cyclone warning - issued for coastal communities when the onset of gales is expected within 24 hours, or are already occurring.

What is the 30/30 rule?

The 30/30 rule is based on the delay between a flash to thunder time interval. If there is a 30 second delay between sighting a lightning flash and hearing thunder, then the lightning activity is approximately 10kms away. You should seek shelter and remain there until thunder to flash is outside the 30 second rule.

Can I touch the victim of a lightning strike?

Yes! Lightning causes death by stopping the heart. The person will not carry a charge and its safe to administer first aid to. Follow the DRABCD first aid method.

What is the maximum depth of water for performing a creek crossing?

Employees are not to attempt a crossing if water levels are 0.4 meters or higher. Regardless of water level, employees are not to attempt a crossing if employees believe that doing so is not safe.

What controls should be in place prior to performing a creek crossing?

Windows open

Seat belts off

Walk the crossing first – unless unsafe to do so e.g. can't swim, crocodiles, fast moving current

Check water depth markers

Ensure crossing including entry and exit points is free from visible hazards

What can we do to prepare our work areas for extreme weather?

Tidy up yards, workshops and lay down areas

Ensure tie downs are in good condition and easily accessible

Ensure emergency supplies and services are made ready

Review emergency plans and ensure all staff are aware of what action to take in the event of a extreme weather